



Who We Are

Gulf Alston Company Ltd., a Saudi limited liability company specializing in the construction and building sector, headquartered in Jubail Industrial City, with commercial registration number 2055138567.



About Us

Vision

To be the leading provider of modular housing solutions, transforming the way people live and build. We aim to set new standards of excellence locally and regionally, becoming the most distinguished in the industry.

Mission

We are committed to setting new standards in modular housing by delivering high-quality products, adopting cutting-edge global technologies, and prioritizing safety and environmental sustainability. Through best practices, we aim to leave a lasting impact in every project we undertake.

Our Strategic Goals

Leading the market through positive and sustainable competitiveness, consistently exceeding client expectations and fulfilling all commitments. We are dedicated to adhering to all laws and regulations, aligning with Saudi Arabia's Vision 2030 to support the Kingdom's growth as a global leader in innovation, quality, and economic development.

Our Value



Innovation

Utilizing cutting-edge technology and continuous R&D to deliver state-of-the-art modular housing solutions.



Quality

Ensuring the highest standards through stringent quality control and the use of certified materials.



Sustainability

Commitment to eco-friendly materials, energy-efficient designs & minimizing environmental impact.



Customer Focus

Offering customized solutions, transparent communication, and dedicated after-sales support for complete satisfaction.



Integrity

Upholding the highest ethical standards, ensuring honesty, compliance, and building trustworthy partnerships.

Our Corporate Social Responsibility (CSR)

Environmental Stewardship

Committed to preserving and protecting the environment through sustainable practices in all our operations.

Promoting Industry Localization

Supporting the growth of Saudi Arabia's construction sector by integrating advanced technologies and local expertise.

Empowering Local Enterprises

Continuously investing in research and development to be pioneer innovative products and services that drive saudi industry progress.

Workforce Development


Empowering Saudization by providing the strategic talent development skills and generate opportunities needed to thrive in the construction industry, with a focus on technology localization.

Supporting Local Products

Actively contributing to the replacement of imported products with high-quality, locally-produced alternatives.

Innovation and R&D

Continuously investing in research and development to pioneer innovative products and services that drive industry progress.

A decorative graphic in the bottom right corner consisting of overlapping geometric shapes in orange and dark teal colors.

Our Services

1

Prefabricated Homes (Portacabins)

High-quality, versatile, and durable prefabricated buildings designed for a range of uses and easy installation.

2

Prefabricated Homes (Precast Concrete)

Innovative precast concrete homes that offer durability, energy efficiency, and faster construction times.

3

Modern Prefabricated Homes (Cube Technology)

State-of-the-art modular housing solutions featuring our patented Cube technology, providing superior flexibility, strength, and design versatility.

Our Solution

Cube Concrete Technology is a patented innovation, with intellectual and industrial property rights registered under an exclusive number. However, the registration process for industrial property rights in Saudi Arabia and across the GCC is ongoing and it is under process.

*** This revolutionary product has been successfully utilized in several European countries for over five years.**



What Distinguishes Our Product

- ◆ **Saudi-Made with European Technology**
A powerful blend of local craftsmanship and advanced European engineering.
- ◆ **Minimal Environmental Impact**
Designed with sustainability in mind, ensuring a low carbon footprint.
- ◆ **Easy Installation**
Modular, flexible designs that allow for quick and easy assembly in any location.
- ◆ **Relocatable**
Homes can be easily moved and reinstalled, providing long-term flexibility.
- ◆ **Superior Energy Efficiency**
Built with energy-saving materials that optimize performance.
- ◆ **Fire-Resistant**
Ensuring safety with high fire resistance standards.

What Distinguishes Our Product (Continue)

◆ Noise Reduction

Engineered to reduce external noise for a more comfortable living environment.

◆ Aesthetic and Design Flexibility

Offering a wide range of design options to suit various styles and preferences.

◆ Low Initial Cost

Affordable without compromising on quality or performance.

◆ Exceptional Strength and Stability

Exceeds global standards for earthquake resistance and structural integrity.

◆ Low Maintenance

Built to last with minimal upkeep required.

Market Segments

Cube House Modular Solutions are versatile and deliver value and innovation across various industries and needs, including:

- Commercial sector
- Industrial sector
- Public sector
- Emergency and Temporary accommodation sector
- Residential sector
- Custom Projects i.e. Hajj and Umrah seasons for the holy sites , Recreational and tourism projects



Business Continuity Management System Policy

Introduction

Gulf Alston Co. Ltd. is committed to protecting its assets, operations, and services to ensure business continuity and sustainable growth as part of the national business sustainability initiative. The company develops plans to continue operations and recover during crises or disasters, such as the COVID-19 pandemic. Gulf Alston remains dedicated to delivering projects on time and within budget, while maintaining high quality and minimizing costs. A future plan will establish a specialized department for business sustainability and governance to align with the growth in Saudi Arabia and the GCC.

Key Objectives

Implement best professional practices.

Develop a succession plan and attract talent.

Utilize technology to boost efficiency.

Promote high-quality and local products to support the economy.

Ensure transparency, safety, and ethics.

Purpose, Scope, and Users

This policy sets out the guidelines for business continuity. It applies to all departments of Gulf Alston Co. Ltd., including employees, suppliers, and contractors, to ensure uninterrupted operations.

General Policy

Executive management ensures that services and resources are managed efficiently, fulfilling all legal and regulatory obligations. The business continuity system covers critical functions and requires recovery plans to mitigate risks. The company proactively addresses incidents through risk analysis, recovery strategies, and continuous improvement of business continuity processes.

** This policy follows ISO 22301 standards and is communicated to all employees and stakeholders. It is reviewed annually or when significant changes occur.*

Reference Documents

Relevant ISO standards (14001:2015, IEC 27001:2022, 45001:2018).

Gulf Alston's business continuity vision.

Legal and contractual requirements.

Risk management and quality standards.

Business continuity and recovery plans.

Safety, Health and Environmental Policies

Safety Policy

At Gulf Alston Co. Ltd., we prioritize the safety of our employees and facilities. We regularly review the implementation of the highest safety standards across all our work sites and update our internal safety policies accordingly. This includes organizing training sessions, providing personal protective equipment (PPE) to all employees, and ensuring the use of warning and instructional signage to maintain a safe working environment. Safety Policy Transition.



Workplace Safety Checklist

| General | Y | N | N/A | Comments |
|--|---|---|-----|----------|
| Workplace is clean and orderly | | | | |
| Hazardous objects/chemicals are clearly labeled | | | | |
| Hazardous objects/chemicals are properly stored | | | | |
| Exits are clear, accessible, and clearly marked | | | | |
| Floors, walls, ceiling, coverings are in good repair | | | | |
| Ventilation ducts are clean and clear | | | | |
| Eating/drinking areas are separated from work areas | | | | |
| Lighting levels are suitable for necessary work | | | | |
| Training | | | | |
| Employees have been given safety training | | | | |
| Safety handbooks are available to all employees | | | | |
| All employees know the building's evacuation plan | | | | |
| Employees know what to do in case of an accident | | | | |
| Training sessions are held regularly | | | | |
| Equipment | | | | |
| Equipment is maintained and in good working order | | | | |
| Equipment is well-grounded | | | | |
| Equipment is available | | | | |
| Equipment is in place | | | | |

Health and Environmental Policy

Gulf Alston Co. Ltd. upholds an uncompromising policy focused on safeguarding both health and the environment. We are committed to ensuring that all operations, whether directly or indirectly related to health and environmental impact, strictly comply with the highest international standards. This includes the safe handling, disposal, and management of chemicals and construction waste, adhering to stringent protocols that mitigate risks to human health and prevent environmental degradation. Our proactive approach underscores our dedication to sustainability, ensuring that every action we take is aligned with global best practices and our long-term commitment to protecting the environment and promoting public health.

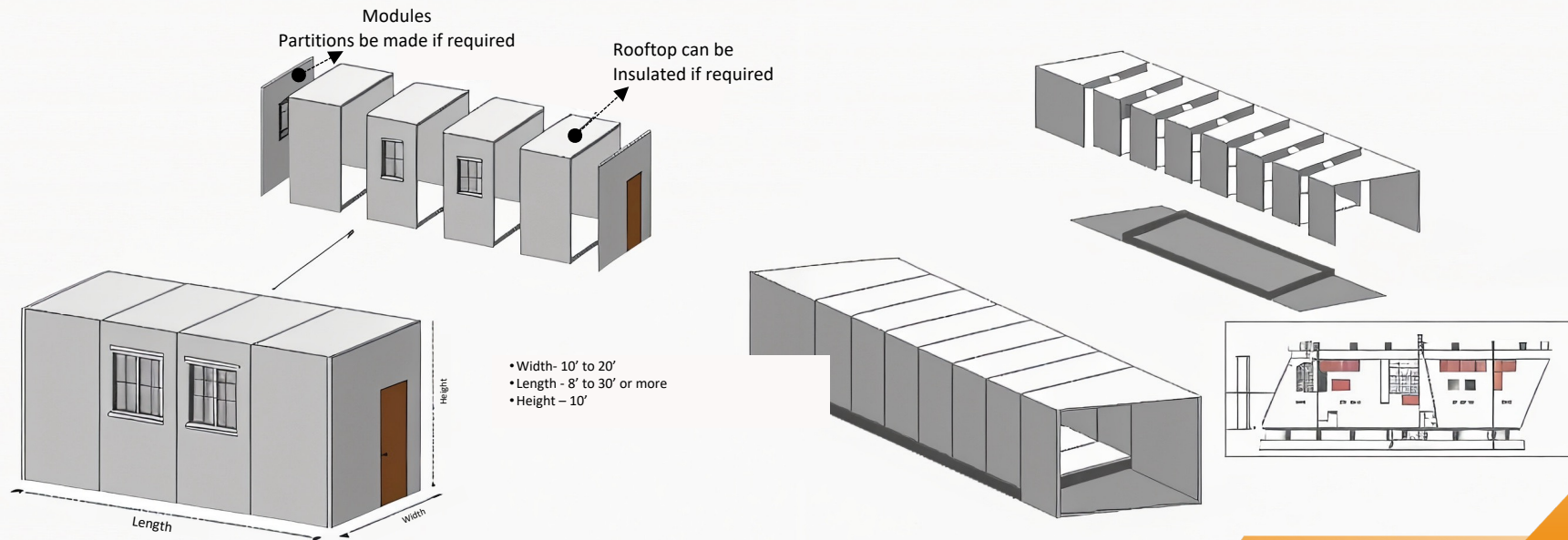
Optimal Resource Utilization Policy

Optimal Resource Utilization Policy

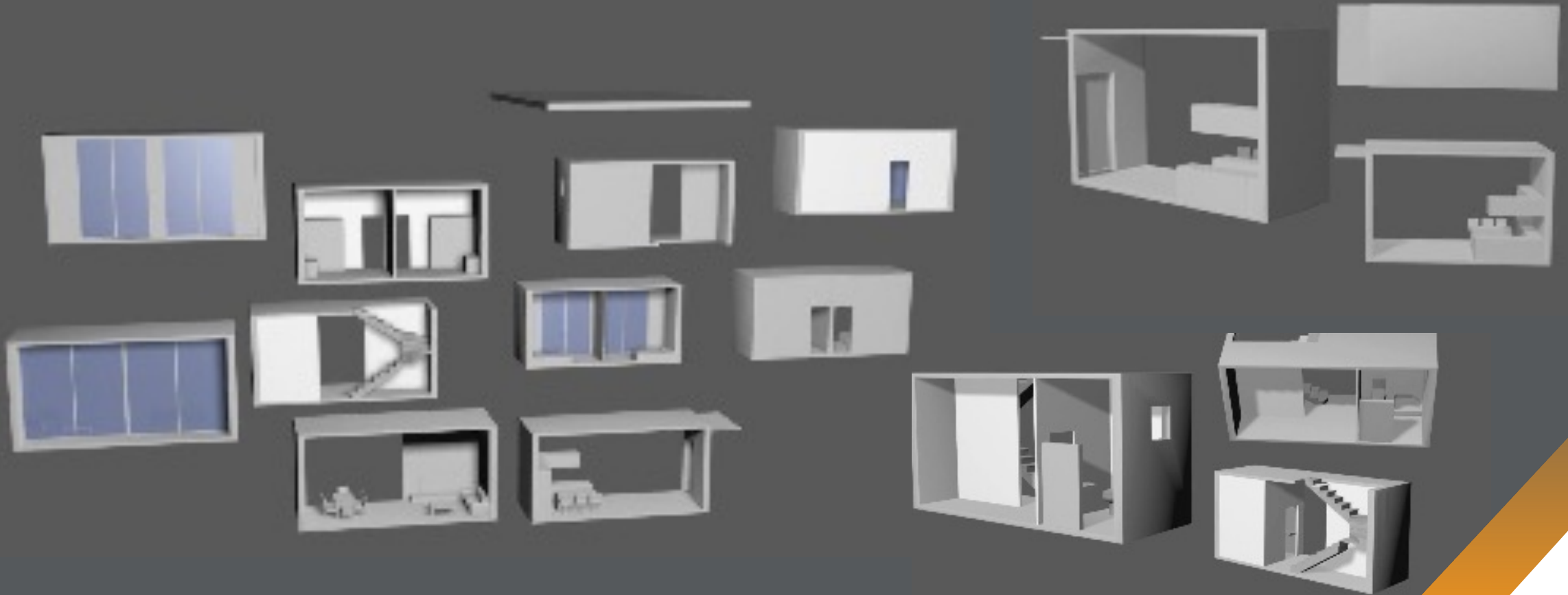
Gulf Alston Co. Ltd. is deeply committed to the optimal utilization of resources through rigorous research, development, and the formation of strategic partnerships with leading experts. Our comprehensive recycling policy is designed to minimize environmental impact and maximize resource efficiency. By aligning with the highest industry standards, we aim to reduce waste, promote circular economy principles, and drive sustainability across all operations. These initiatives reflect our long-term vision of responsible resource management, ensuring that every action contributes to environmental stewardship and sustainable growth.

Cube House Modular System

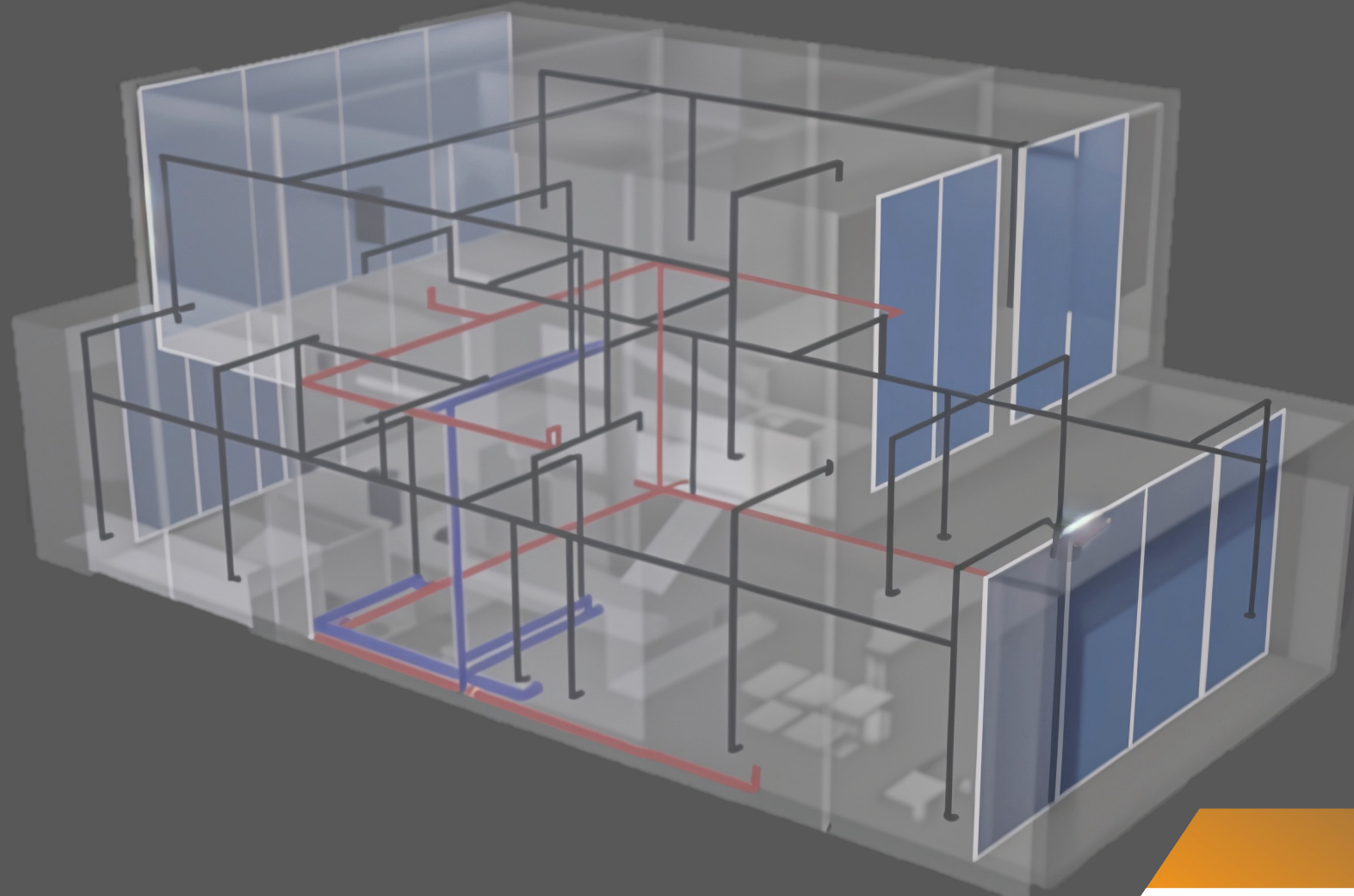
The Cube House Modular System consists of prefabricated concrete elements joined together with robust glass joints. This innovative construction method enables rapid assembly, resulting in a house that is ready for occupancy in a remarkably short time.



Cube House System Elements



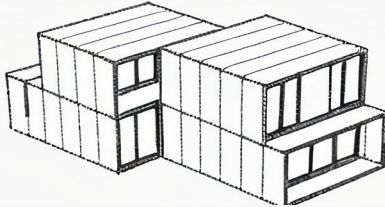
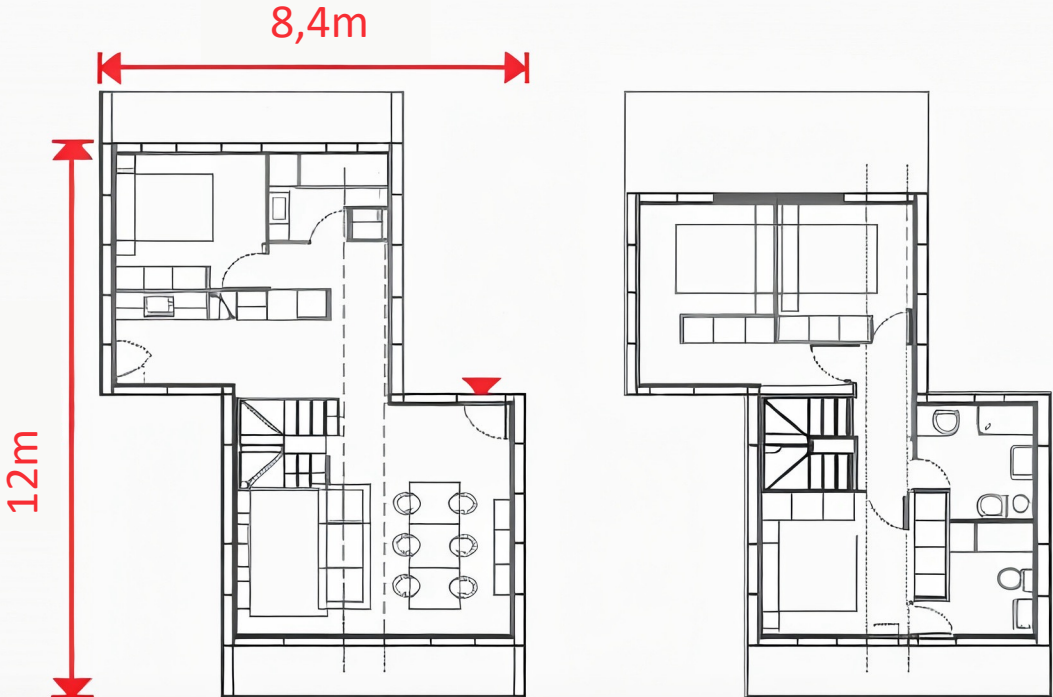
Hydro and Electrical System



Ready Design

More than 60 design

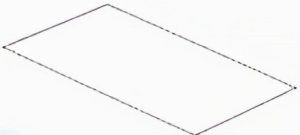
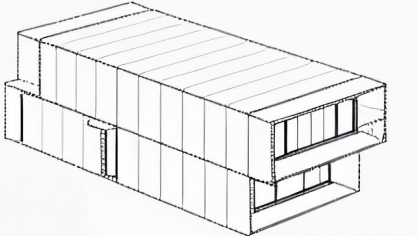
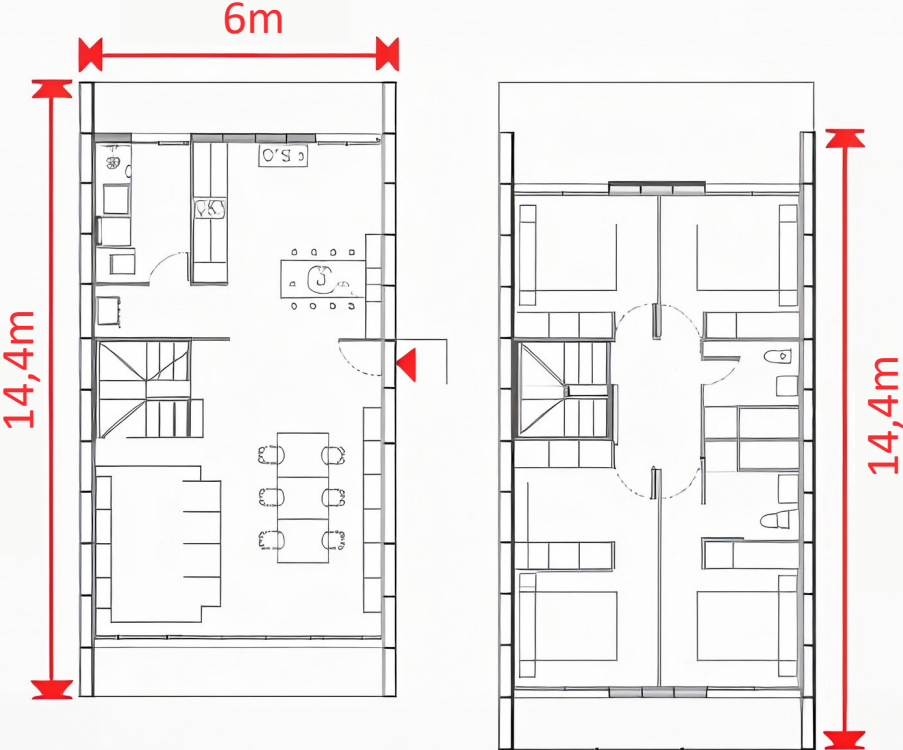
SLS2137



Ready Design

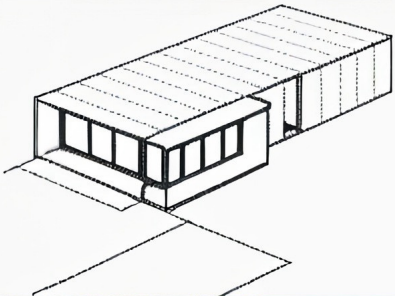
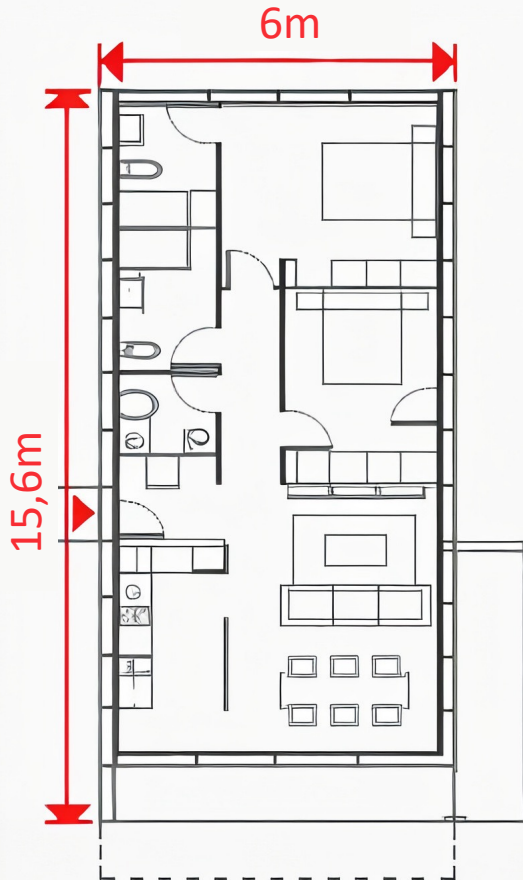
More than 60 design

SLS213744A



Ready Design

More than 60 design

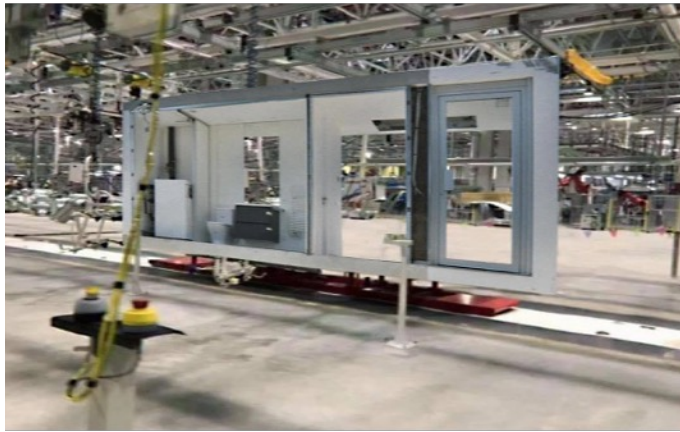


SLA128A



Cube House Phases

Production Phase



Transport Phase



Installation Phase



Walls & External Cladding

External Cladding & Decorations



Retaining Walls





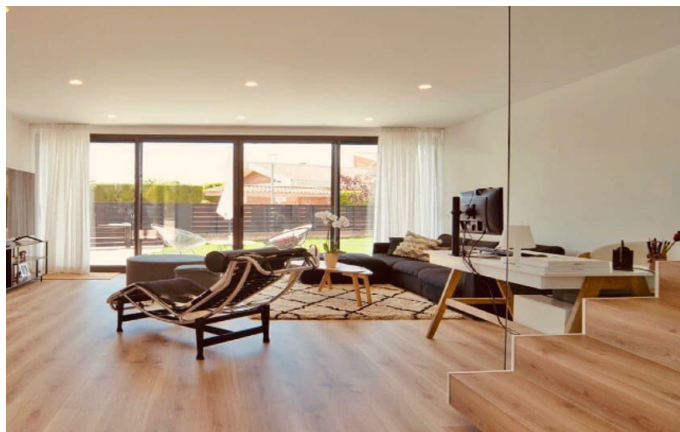
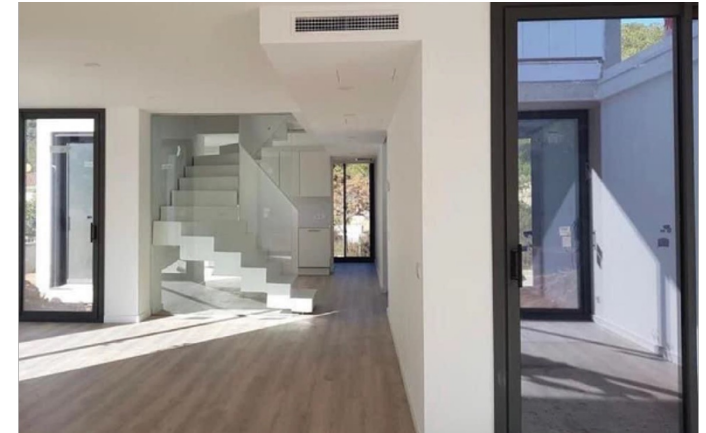
XXXX



Precast Pool



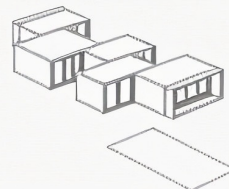
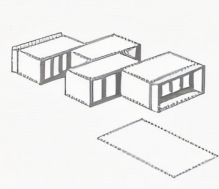
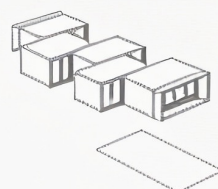
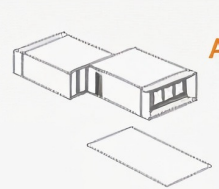
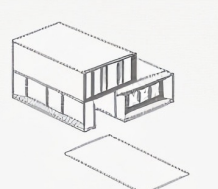
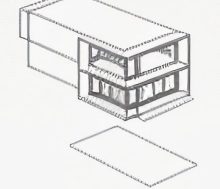
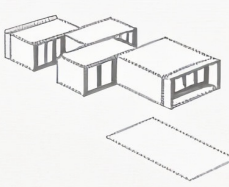
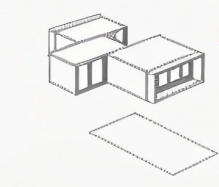
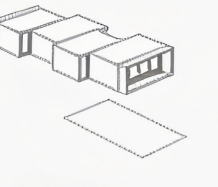
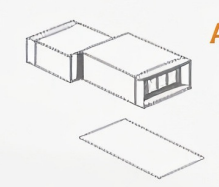
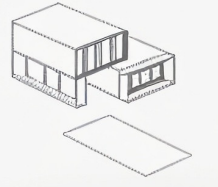
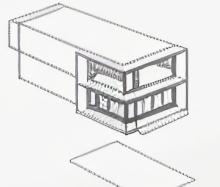
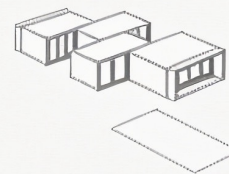
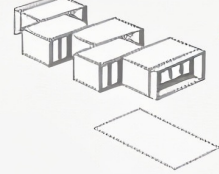
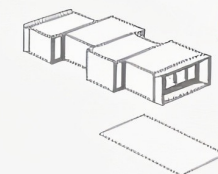
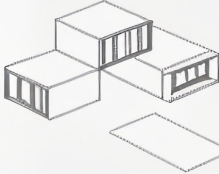
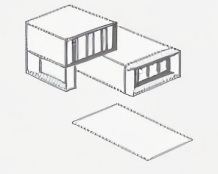
Indoor Overall Looks and Design



Outdoor Overall Looks and Design

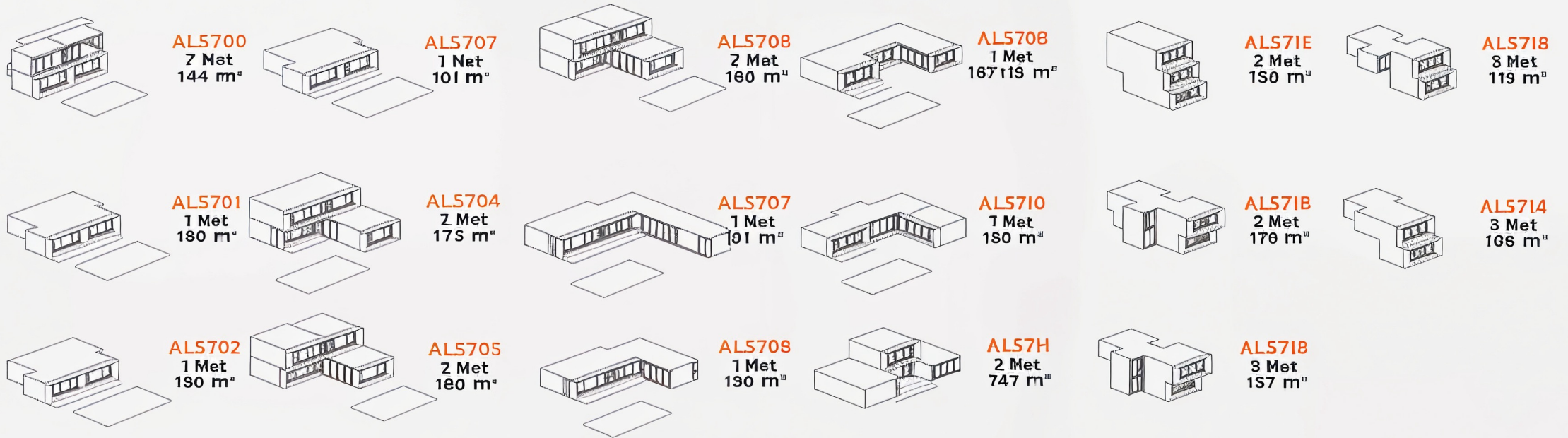


Cube Houses Designs

| | | | | | |
|--|---|---|---|--|--|
|  <p>ALS404 1 Hat 122 m²</p> |  <p>ALS405 1 Hat 88 m²</p> |  <p>ALS400 1 Hat 115 m²</p> |  <p>ALS40T 1 Het 46 m²</p> |  <p>ALS412 3 Het 34 m²</p> |  <p>ALS417 2 Net 156 m²</p> |
|  <p>ALS407 1 Hat 104 m²</p> |  <p>ALS404 1 Hat 72 m²</p> |  <p>ALS40T 1 Hat 94 m²</p> |  <p>ALS410 1 Hat 75 m²</p> |  <p>ALS415 2 Het 86 m²</p> |  <p>ALS414 2 Net 175 m²</p> |
|  <p>ALS402 1 Hat 84 m²</p> |  <p>ALS405 1 Hat 115 m²</p> |  <p>ALS405 1 Hat 34 m²</p> |  <p>ALS411 2 Het 108 m²</p> |  <p>ALS411 2 Het 73 m²</p> | |



Cube Houses Designs



For any further questions or business inquiries, please reach us via:

Email: Info@gulfalstone.com

Phone: +966 59 916 2400

Location: Jubail 2